

Tiger Product Catalogue





Tiger GmbH

Since over 30 years we manufacture highest ceramic qualities for the casting of **Platinum-. Gold-, Palladium-, Steel- and Titanium** alloys.

With ongoing enlargements and adaptations of our assortment we ensure a reliable delivery to our customers. Highest qualities as well as solution-oriented innovations make the **company TIGER** to a **strong partner**.



WE WORK FOR YOUR SATISFACTION!

Table of contents

Ceramic	P. 4 - 40
ZrO Ceramic	P. 41 - 41
Graphite	P. 42 - 92
Clay Graphite / SiC	P. 93 - 93
Investment Powder	P. 94 - 95
Wax	P. 96 - 97
Resin	P. 98 - 98
Casting Equipment	P. 99 - 108
Machines	P. 109 - 110

Ceramic

Bego



Description		
Tiger Item No.:		6900
Original Item No.:		/
Machine Manufacturer		Bego
Sizes in mm		
Height:		73
Ø Length:		87
Ø Width:		51
Ø Spout Opening:		8,5

Ceramic

Degussa



Description		
Tiger Item No.:		5000
Original Item No.:		Universal
Machine Manufacturer		Degussa
Sizes in mm		
Height:		46
Length:		72
Width:		57
Ø Spout Opening:		8



Description		
Tiger Item No.:		5001
Original Item No.:		Slotted
Machine Manufacturer		Degussa
Sizes in mm		
Height:		46
Length:		74
Width:		57
Ø Spout Opening:		8

Ceramic

Erscem



Description		
Tiger Item No.:		6503
Original Item No.:		C3
Machine Manufacturer		Erscem
Sizes in mm		
Height:		124
Ø Top:		68
Ø Bottom:		57
Ø Spout Opening:		13



Description		
Tiger Item No.:		6522
Original Item No.:		C 2 (shortened)
Machine Manufacturer		Erscem
Sizes in mm		
Height:		80
Ø Top:		68
Ø Bottom:		60
Ø Spout Opening:		14



Description		
Tiger Item No.:		6523
Original Item No.:		C3 (shortened)
Machine Manufacturer		Erscem
Sizes in mm		
Height:		100
Ø Top:		68
Ø Bottom:		57
Ø Spout Opening:		13

Ceramic

Galloni



Description		
Tiger Item No.:		5101
Original Item No.:		A100.233
Machine Manufacturer		Galloni
Sizes in mm		
Height:		73
Ø Top:		44
Ø Bottom:		32
Ø Spout Opening:		7



Description		
Tiger Item No.:		5102
Original Item No.:		A100.398
Machine Manufacturer		Galloni
Sizes in mm		
Height:		74
Ø Top:		41
Ø Bottom:		32
Ø Spout Opening:		8



Description		
Tiger Item No.:		5103
Original Item No.:		/
Machine Manufacturer		Galloni
Sizes in mm		
Height:		67
Ø Top:		44
Ø Bottom:		31
Ø Spout Opening:		7

Ceramic

Galloni



Description		
Tiger Item No.:		5112
Original Item No.:		A100.578
Machine Manufacturer		Galloni
Sizes in mm		
Height:		116
Ø Top:		70
Ø Bottom:		51
Ø Spout Opening:		9



Description		
Tiger Item No.:		5113
Original Item No.:		A100.512
Machine Manufacturer		Galloni
Sizes in mm		
Height:		82
Ø Top:		52
Ø Bottom:		38
Ø Spout Opening:		10



Description		
Tiger Item No.:		5138
Original Item No.:		A100.496
Machine Manufacturer		Galloni
Sizes in mm		
Height:		81
Ø Top:		51
Ø Bottom:		41
Ø Spout Opening:		9

Ceramic

Galloni



Description		
Tiger Item No.:		5139
Original Item No.:		A100.634
Machine Manufacturer		Galloni
Sizes in mm		
Height:		82
Ø Top:		51
Ø Bottom:		42
Ø Spout Opening:		11



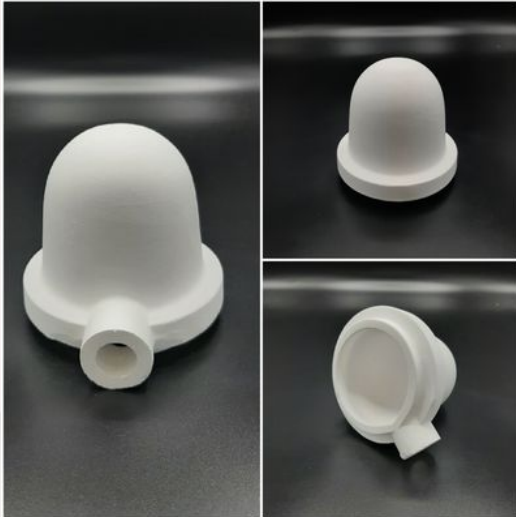
Description		
Tiger Item No.:		5150
Original Item No.:		A100.559
Machine Manufacturer		Galloni
Sizes in mm		
Height:		63
Ø Top:		43
Ø Bottom:		32
Ø Spout Opening:		11



Description		
Tiger Item No.:		5160
Original Item No.:		A100.650
Machine Manufacturer		Galloni
Sizes in mm		
Height:		90
Ø Top:		90
Ø Bottom:		71
Ø Spout Opening:		11

Ceramic

Galloni



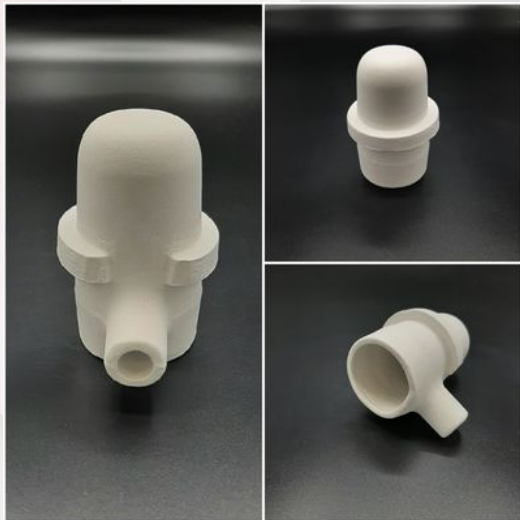
Description		
Tiger Item No.:		6522
Original Item No.:		A100.649
Machine Manufacturer		Galloni
Sizes in mm		
Height:		80
Ø Top:		68
Ø Bottom:		60
Ø Spout Opening:		14



Description		
Tiger Item No.:		6523
Original Item No.:		A100.652
Machine Manufacturer		Galloni
Sizes in mm		
Height:		100
Ø Top:		68
Ø Bottom:		57
Ø Spout Opening:		13

Ceramic

Heraeus



Description		
Tiger Item No.:		6356
Original Item No.:		/
Machine Manufacturer		Heraeus
Sizes in mm		
Height:		72
Ø Top:		42
Ø Bottom:		35
Ø Spout Opening:		9

Ceramic

Indutherm



Description		
Tiger Item No.:		8008
Original Item No.:		MC 100
Machine Manufacturer		Indutherm
Sizes in mm		
Height:		93
Ø Top:		61
Ø Bottom:		42
Ø Spout Opening:		10



Description		
Tiger Item No.:		8010
Original Item No.:		MC 100
Machine Manufacturer		Indutherm
Sizes in mm		
Height:		108
Ø Top:		56
Ø Bottom:		40
Ø Spout Opening:		10



Description		
Tiger Item No.:		8052
Original Item No.:		MC 15
Machine Manufacturer		Indutherm
Sizes in mm		
Height:		63
Ø Top:		44
Ø Bottom:		32
Ø Spout Opening:		9

Ceramic

Indutherm



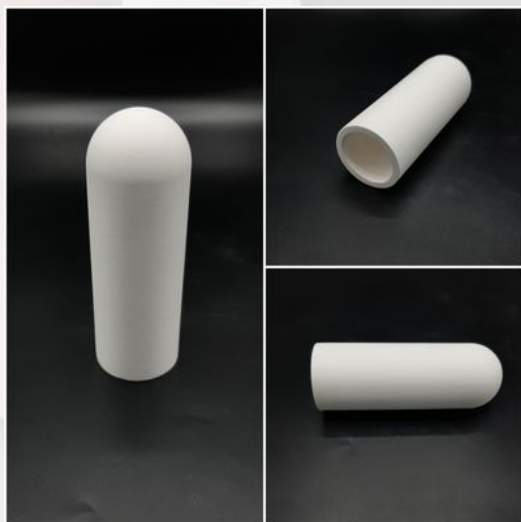
Description		
Tiger Item No.:		5501
Original Item No.:		TM50C
Machine Manufacturer		Indutherm
Sizes in mm		
Height:		87
Ø Top:		41
Ø Bottom:		39
Ø Spout Opening:		/



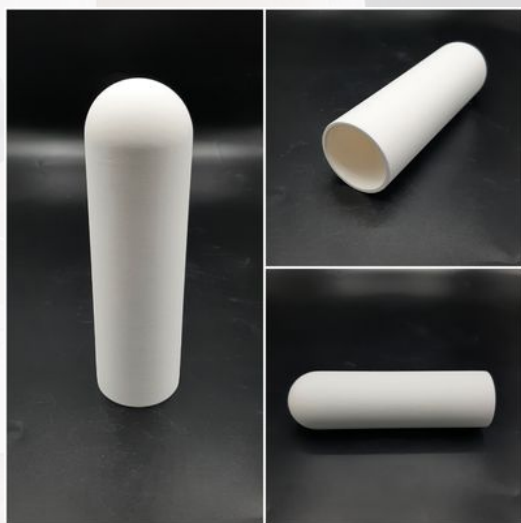
Description		
Tiger Item No.:		5413
Original Item No.:		VTC200/MU200C
Machine Manufacturer		Indutherm
Sizes in mm		
Height:		113
Ø Top:		77
Ø Bottom:		49
Ø Spout Opening:		/

Ceramic

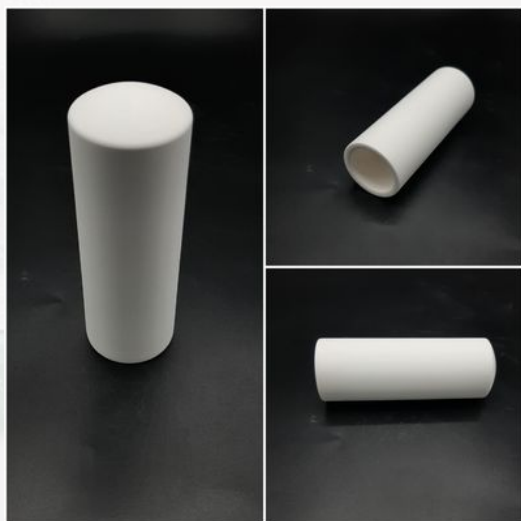
Lindner



Description		
Tiger Item No.:		6600
Typ:		HLS 1,5
Machine Manufacturer		Lindner
Sizes in mm		
Height:		100
Ø Top:		35
Ø Bottom:		35
Ø Spout Opening:		27



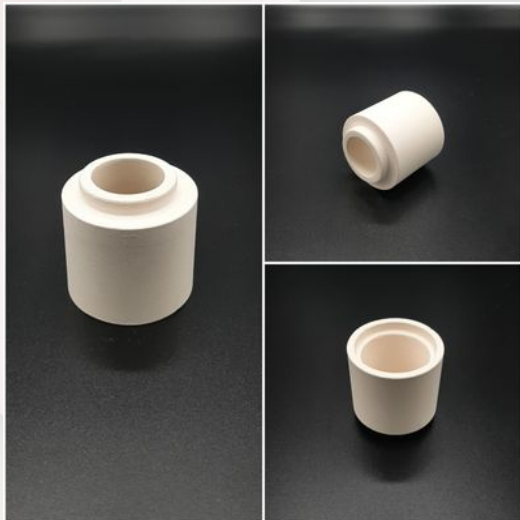
Description		
Tiger Item No.:		6602
Typ:		HLS 2,0
Machine Manufacturer		Lindner
Sizes in mm		
Height:		130
Ø Top:		38
Ø Bottom:		38
Ø Spout Opening:		33,5



Description		
Tiger Item No.:		6610
Typ:		HLS 1,5
Machine Manufacturer		Lindner
Sizes in mm		
Height:		98
Ø Top:		34,5
Ø Bottom:		34
Ø Spout Opening:		26

Ceramic

Lindner



Description		
Tiger Item No.:		6601
Typ:		HLS 1,5
Machine Manufacturer		Lindner
Sizes in mm		
Height:		41
Ø Top:		30
Ø Bottom:		42
Ø Spout Opening:		22

Ceramic

Linn



Description		
Tiger Item No.:		5700
Original Item No.:		SKQ-1
Machine Manufacturer		Linn
Sizes in mm		
Height:		117
Ø Top:		63
Ø Bottom:		45
Ø Spout Opening:		8



Description		
Tiger Item No.:		5710
Original Item No.:		DKV-2
Machine Manufacturer		Linn
Sizes in mm		
Height:		71,5
Ø Top:		38
Ø Bottom:		38
Ø Spout Opening:		7



Description		
Tiger Item No.:		5725
Original Item No.:		/
Machine Manufacturer		Linn
Sizes in mm		
Height:		102
Ø Top:		64
Ø Bottom:		56
Ø Spout Opening:		13

Ceramic

Linn



Description		
Tiger Item No.:		5748
Original Item No.:		/
Machine Manufacturer		Linn
Sizes in mm		
Height:		116
Ø Top:		62
Ø Bottom:		62
Ø Spout Opening:		11



Description		
Tiger Item No.:		5761
Original Item No.:		DK 2
Machine Manufacturer		Linn
Sizes in mm		
Height:		77
Ø Top:		40
Ø Bottom:		36
Ø Spout Opening:		10

Ceramic

Manfredi



Description		
Tiger Item No.:		5201
Original Item No.:		Y Pt 100
Machine Manufacturer		Manfredi
Sizes in mm		
Height:		104
Ø Top:		82
Ø Bottom:		59
Ø Spout Opening:		/



Description		
Tiger Item No.:		5245
Original Item No.:		Y Pt 35
Machine Manufacturer		Manfredi
Sizes in mm		
Height:		76
Ø Top:		58
Ø Bottom:		34
Ø Spout Opening:		8,5



Description		
Tiger Item No.:		5246
Original Item No.:		Y Pt 15
Machine Manufacturer		Manfredi
Sizes in mm		
Height:		72
Ø Top:		45
Ø Bottom:		34
Ø Spout Opening:		6

Ceramic

Manfredi



Description		
Tiger Item No.:		5252
Original Item No.:		C 15
Machine Manufacturer		Manfredi
Sizes in mm		
Height:		65
Ø Top:		48
Ø Bottom:		40
Ø Spout Opening:		8

Ceramic

Saed



Description		
Tiger Item No.:		6001
Original Item No.:		/
Machine Manufacturer		Saed
Sizes in mm		
Height:		69
Ø Top:		37
Ø Bottom:		32
Ø Spout Opening:		8



Description		
Tiger Item No.:		6002
Original Item No.:		/
Machine Manufacturer		Saed
Sizes in mm		
Height:		76
Ø Top:		50
Ø Bottom:		43
Ø Spout Opening:		10



Description		
Tiger Item No.:		6003
Original Item No.:		/
Machine Manufacturer		Saed
Sizes in mm		
Height:		92
Ø Top:		50
Ø Bottom:		43
Ø Spout Opening:		8

Ceramic

Saed



Description		
Tiger Item No.:		6004
Original Item No.:		/
Machine Manufacturer		Saed
Sizes in mm		
Height:		107
Ø Top:		51
Ø Bottom:		41
Ø Spout Opening:		9

Ceramic

Schultheiss



Description		
Tiger Item No.:		5501
Original Item No.:		/
Machine Manufacturer		Schultheiss
Sizes in mm		
Height:		87
Ø Top:		41
Ø Bottom:		39
Ø Spout Opening:		/



Description		
Tiger Item No.:		5502
Original Item No.:		/
Machine Manufacturer		Schultheiss
Sizes in mm		
Height:		89
Ø Top:		54
Ø Bottom:		52
Ø Spout Opening:		/



Description		
Tiger Item No.:		5503
Original Item No.:		PPC100
Machine Manufacturer		Schultheiss
Sizes in mm		
Height:		100
Ø Top:		54
Ø Bottom:		52
Ø Spout Opening:		/

Ceramic

Schultheiss



Description		
Tiger Item No.:		5540
Original Item No.:		VPC40 outer
Machine Manufacturer		Schultheiss
Sizes in mm		
Height:		77
Ø Top:		66
Ø Bottom:		49
Ø Spout Opening:		15

Ceramic

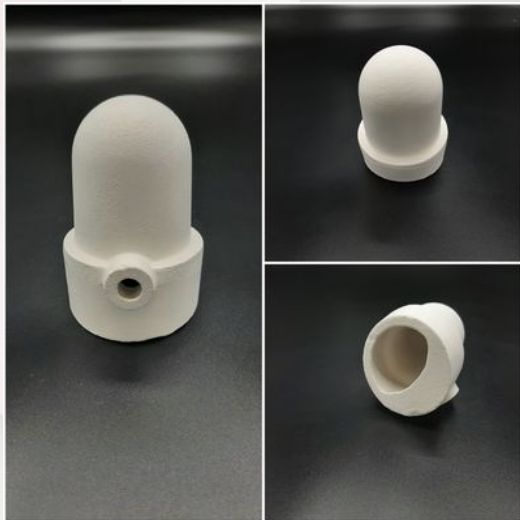
Seit



Description		
Tiger Item No.:		5305
Original Item No.:		/
Machine Manufacturer		Seit
Sizes in mm		
Height:		83
Ø Top:		60
Ø Bottom:		44
Ø Spout Opening:		10

Ceramic

Tannabe



Description		
Tiger Item No.:		6801
Original Item No.:		/
Machine Manufacturer		Tanabe
Sizes in mm		
Height:		80
Ø Top:		52
Ø Bottom:		42
Ø Spout Opening:		7



Description		
Tiger Item No.:		6803
Original Item No.:		/
Machine Manufacturer		Tanabe
Sizes in mm		
Height:		80
Ø Top:		52
Ø Bottom:		42
Ø Spout Opening:		7

Ceramic

Tiger



Description		
Tiger Item No.:		8038
Original Item No.:		/
Machine Manufacturer		/
Sizes in mm		
Height:		78
Ø Top:		50
Ø Bottom:		43
Ø Spout Opening:		10



Description		
Tiger Item No.:		8039
Original Item No.:		/
Machine Manufacturer		/
Sizes in mm		
Height:		78
Ø Top:		50
Ø Bottom:		43
Ø Spout Opening:		10



Description		
Tiger Item No.:		8047
Original Item No.:		/
Machine Manufacturer		/
Sizes in mm		
Height:		86
Ø Top:		41
Ø Bottom:		35
Ø Spout Opening:		8

Ceramic

Tiger



Description		
Tiger Item No.:		8049
Original Item No.:		/
Machine Manufacturer		/
Sizes in mm		
Height:		78
Ø Top:		39
Ø Bottom:		35
Ø Spout Opening:		9



Description		
Tiger Item No.:		8050
Original Item No.:		/
Machine Manufacturer		/
Sizes in mm		
Height:		112
Ø Top:		53
Ø Bottom:		42
Ø Spout Opening:		9



Description		
Tiger Item No.:		8053
Original Item No.:		/
Machine Manufacturer		/
Sizes in mm		
Height:		78
Ø Top:		45
Ø Bottom:		34
Ø Spout Opening:		8

Ceramic

Tiger



Description		
Tiger Item No.:		8054
Original Item No.:		/
Machine Manufacturer		/
Sizes in mm		
Height:		57
Ø Top:		38
Ø Bottom:		32
Ø Spout Opening:		7



Description		
Tiger Item No.:		8055
Original Item No.:		/
Machine Manufacturer		/
Sizes in mm		
Height:		61
Ø Top:		44
Ø Bottom:		32
Ø Spout Opening:		6



Description		
Tiger Item No.:		8139
Original Item No.:		/
Machine Manufacturer		/
Sizes in mm		
Height:		78
Ø Top:		51
Ø Bottom:		43
Ø Spout Opening:		9

Ceramic

Tiger



Description		
Tiger Item No.:		8150
Original Item No.:		/
Machine Manufacturer		/
Sizes in mm		
Height:		112
Ø Top:		53
Ø Bottom:		42
Ø Spout Opening:		9



Description		
Tiger Item No.:		8250
Original Item No.:		/
Machine Manufacturer		/
Sizes in mm		
Height:		112
Ø Top:		53
Ø Bottom:		42
Ø Spout Opening:		9



Description		
Tiger Item No.:		8339
Original Item No.:		/
Machine Manufacturer		/
Sizes in mm		
Height:		78
Ø Top:		51
Ø Bottom:		43
Ø Spout Opening:		9

Ceramic

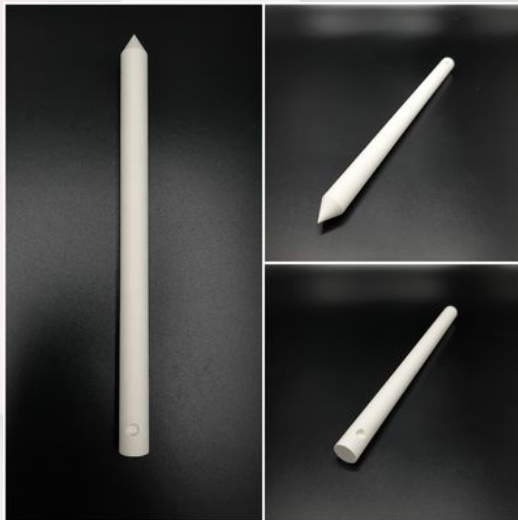
Tiger



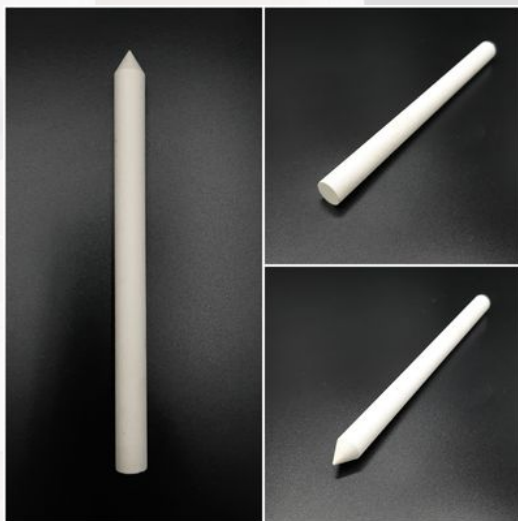
Description		
Tiger Item No.:		8080
Typ:		Collar crucible
Machine Manufacturer		/
Sizes in mm		
Height:		115
Ø Top:		88
Ø Bottom:		72
Ø Spout Opening:		/

Ceramic

Tiger



Description		
Tiger Item No.:		90012180
Type:		tip / sidehole
Machine Manufacturer:		/
Sizes in mm		
Height:		180
Ø Top:		12
Ø Bottom:		12
Ø Hole:		4 / 2



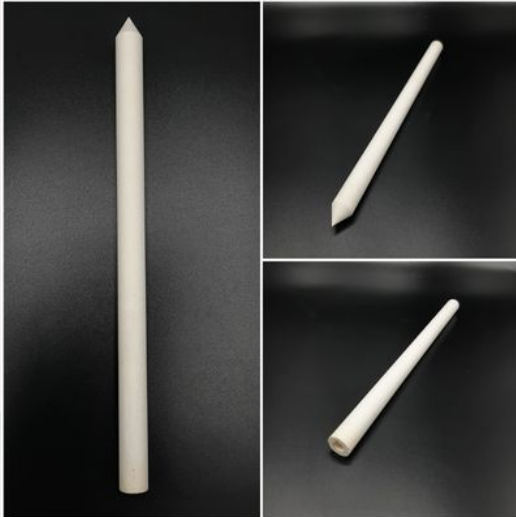
Description		
Tiger Item No.:		91012165
Type:		tip
Machine Manufacturer:		/
Sizes in mm		
Height:		165
Ø Top:		12
Ø Bottom:		12
Ø Hole:		/



Description		
Tiger Item No.:		91012180
Type:		tip
Machine Manufacturer:		/
Sizes in mm		
Height:		180
Ø Top:		12
Ø Bottom:		12
Ø Hole:		/

Ceramic

Tiger



Description		
Tiger Item No.:		91612205
Type:		tip
Machine Manufacturer:		/
Sizes in mm		
Height:		205
Ø Top:		12
Ø Bottom:		12
Ø Hole:		6 / 185



Description		
Tiger Item No.:		92012166
Type:		flat
Machine Manufacturer:		/
Sizes in mm		
Height:		166
Ø Top:		12
Ø Bottom:		12
Ø Hole:		/



Description		
Tiger Item No.:		92612166
Type:		flat / hole
Machine Manufacturer:		/
Sizes in mm		
Height:		166
Ø Top:		12
Ø Bottom:		12
Ø Hole:		continuous

Ceramic

Topcast



Description		
Tiger Item No.:		5245
Original Item No.:		TCE5
Machine Manufacturer		Topcast
Sizes in mm		
Height:		76
Ø Top:		58
Ø Bottom:		34
Ø Spout Opening:		8,5



Description		
Tiger Item No.:		9251
Original Item No.:		TCE10
Machine Manufacturer		Topcast
Sizes in mm		
Height:		134
Ø Top:		74
Ø Bottom:		70
Ø Spout Opening:		10



Description		
Tiger Item No.:		9250
Original Item No.:		TCE10
Machine Manufacturer		Topcast
Sizes in mm		
Height:		16,5
Ø Length:		119
Ø Width:		71
Ø Spout Opening:		/

Ceramic

Ultraflex



Description		
Tiger Item No.:		5138
Original Item No.:		2DET-015-000-KF
Machine Manufacturer		Ultraflex
Sizes in mm		
Height:		81
Ø Top:		51
Ø Bottom:		41
Ø Spout Opening:		9



Description		
Tiger Item No.:		5305
Original Item No.:		2DET-017-000-KD
Machine Manufacturer		Ultraflex
Sizes in mm		
Height:		83
Ø Top:		60
Ø Bottom:		44
Ø Spout Opening:		10



Description		
Tiger Item No.:		6004
Original Item No.:		2DET-16-000-KM
Machine Manufacturer		Ultraflex
Sizes in mm		
Height:		107
Ø Top:		51
Ø Bottom:		41
Ø Spout Opening:		9

Ceramic

Ultraflex



Description		
Tiger Item No.:		5922
Original Item No.:		2DET-016-000-KO
Machine Manufacturer		Ultraflex
Sizes in mm		
Height:		142
Ø Top:		67
Ø Bottom:		67
Ø Spout Opening:		/



Description		
Tiger Item No.:		9190
Original Item No.:		2DET-017-000-KN
Machine Manufacturer		Ultraflex
Sizes in mm		
Height:		145
Ø Top:		80
Ø Bottom:		61
Ø Spout Opening:		11,5



Description		
Tiger Item No.:		5601
Original Item No.:		2DET-016-000-K
Machine Manufacturer		Ultraflex
Sizes in mm		
Height:		82
Ø Top:		55
Ø Bottom:		41
Ø Spout Opening:		8

Only for Steel!

Ceramic

Ultraflex



Description		
Tiger Item No.:		5246
Original Item No.:		2DET-015-000-KG
Machine Manufacturer		Ultraflex
Sizes in mm		
Height:		72
Ø Top:		45
Ø Bottom:		34
Ø Spout Opening:		6



Description		
Tiger Item No.:		6002
Original Item No.:		2DET-015-000-KE
Machine Manufacturer		Ultraflex
Sizes in mm		
Height:		76
Ø Top:		50
Ø Bottom:		43
Ø Spout Opening:		10



Description		
Tiger Item No.:		9190
Original Item No.:		2DET-017-000-KN
Machine Manufacturer		Ultraflex
Sizes in mm		
Height:		121
Ø Top:		72
Ø Bottom:		61
Ø Spout Opening:		11,5

Ceramic

Wesco



Description		
Tiger Item No.:		6700
Original Item No.:		Type D
Machine Manufacturer		Wesco
Sizes in mm		
Height:		56
Ø Top:		85
Ø Bottom:		50
Ø Spout Opening:		8



Description		
Tiger Item No.:		6710
Original Item No.:		Straight Side
Machine Manufacturer		Wesco
Sizes in mm		
Height:		35
Ø Top:		75
Ø Bottom:		75
Ø Spout Opening:		/

Ceramic

Yasui



Description		
Tiger Item No.:		5601
Original Item No.:		VCC
Machine Manufacturer		Yasui
Sizes in mm		
Height:		82
Ø Top:		55
Ø Bottom:		41
Ø Spout Opening:		8



Description		
Tiger Item No.:		5602
Original Item No.:		VCC
Machine Manufacturer		Yasui
Sizes in mm		
Height:		85
Ø Top:		51
Ø Bottom:		37
Ø Spout Opening:		8



Description		
Tiger Item No.:		5629
Typ:		Holder (K2)
Machine Manufacturer		Yasui
Sizes in mm		
Height:		135
Ø Top:		100
Ø Bottom:		83
Ø Spout Opening:		35

Ceramic

Yoshida



Description		
Tiger Item No.:		5801
Original Item No.:		YGP 5AE
Machine Manufacturer		Yoshida
Sizes in mm		
Height:		53
Ø Top:		53
Ø Bottom:		40
Ø Spout Opening:		/



Description		
Tiger Item No.:		5802
Original Item No.:		Gapman
Machine Manufacturer		Yoshida
Sizes in mm		
Height:		43
Ø Top:		43
Ø Bottom:		30
Ø Spout Opening:		/

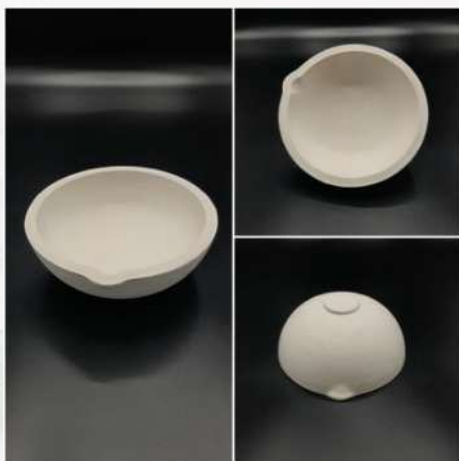


Description		
Tiger Item No.:		5811
Original Item No.:		Holder
Machine Manufacturer		Yoshida
Sizes in mm		
Height:		53
Ø Top:		53
Ø Bottom:		42
Ø Spout Opening:		/

Ceramic



We have a big range of crucibles. Customized sizes and shapes are possible on request.



ZrO Ceramic

Item No.:	Description	Outer Diameter in mm	Height in mm	Inner Diameter in mm	Height inside in mm
7701.33	Zirconium oxide	42	70	30	60
7702.88	Aluminum oxide	64	115	50	105
7703.38	ZrO ₂ / Al ₂ O ₃ Set # 0	64	135	30	60
7711.33	Zirconium oxide	56	88	38	78
7712.88	Aluminum oxide	86	103	66	93
7713.38	ZrO ₂ / Al ₂ O ₃ Set # 1	86	123	38	78
7721.33	Zirconium oxide	70	115	50	105
7722.88	Aluminum oxide	100	135	80	125
7723.38	ZrO ₂ / Al ₂ O ₃ Set # 2	100	155	50	105
7731.33	Zirconium oxide	80	142	58	128
7732.88	Aluminum oxide	110	162	90	155
7733.38	ZrO ₂ / Al ₂ O ₃ Set # 3	110	192	58	128
7741.33	Zirconium oxide	98	170	77	155
7742.88	Aluminum oxide	128	205	108	195
7743.38	ZrO ₂ / Al ₂ O ₃ Set # 4	128	235	77	155
7751.33	Zirconium oxide	122	245	98	232
7752.88	Aluminum oxide	150	300	130	290
7753.38	ZrO ₂ / Al ₂ O ₃ Set # 5	150	330	98	232
7761.33	Zirconium oxide	150	250	125	230
7762.88	Aluminum oxide	196	310	166	295
7763.38	ZrO ₂ / Al ₂ O ₃ Set # 6	196	360	125	230



Graphite

Ceia



Description		
Tiger Item No.:		8651
Type:		F1 / 1 Kg
Machine Manufacturer:		Ceia
Sizes in mm		
Height:		98 / 85
Ø Ceramic:		37 / 58
Ø Graphite:		57 / 67
Ø Spout Opening:		18 / 14



Description		
Tiger Item No.:		8602
Type:		F2 / 2 Kg
Machine Manufacturer:		Ceia
Sizes in mm		
Height:		140 / 130
Ø Ceramic:		42 / 68
Ø Graphite:		70 / 78
Ø Spout Opening:		/



Description		
Tiger Item No.:		8603
Type:		F3 / 3 Kg
Machine Manufacturer:		Ceia
Sizes in mm		
Height:		145 / 132
Ø Ceramic:		59 / 80
Ø Graphite:		85 / 94
Ø Spout Opening:		/

Graphite

Ceia



Description		
Tiger Item No.:		8665
Type:		F5 / 5 Kg
Machine Manufacturer:		Ceia
Sizes in mm		
Height:		145 / 134
Ø Ceramic:		65 / 98
Ø Graphite:		99 / 117
Ø Spout Opening:		29 / 14



Description		
Tiger Item No.:		8666
Type:		F5 / 6 Kg
Machine Manufacturer:		Ceia
Sizes in mm		
Height:		156 / 155
Ø Ceramic:		70 / 92
Ø Graphite:		105 / 115
Ø Spout Opening:		/



Description		
Tiger Item No.:		8668
Type:		F5 / 8 Kg
Machine Manufacturer:		Ceia
Sizes in mm		
Height:		165 / 155
Ø Ceramic:		75 / 100
Ø Graphite:		105 / 116
Ø Spout Opening:		/

Graphite

Ceia



Description		
Tiger Item No.:		8680
Type:		F9 / 10 Kg
Machine Manufacturer:		Ceia
Sizes in mm		
Height:		181 / 180
Ø Ceramic:		80 / 99
Ø Graphite:		114 / 123
Ø Spout Opening:		/



Description		
Tiger Item No.:		8612
Type:		F12 / 12 Kg
Machine Manufacturer:		Ceia
Sizes in mm		
Height:		181 / 180
Ø Ceramic:		87 / 111
Ø Graphite:		127 / 135
Ø Spout Opening:		/



Description		
Tiger Item No.:		8616
Type:		F16 / 15 Kg
Machine Manufacturer:		Ceia
Sizes in mm		
Height:		215 / 195
Ø Ceramic:		96 / 149
Ø Graphite:		144 / 153
Ø Spout Opening:		46 / 21

Graphite

Galloni



Description		
Tiger Item No.:		5180
Type:		VCM
Machine Manufacturer:		Galloni
Sizes in mm		
Height:		100 / 120
Ø Top:		78
Ø Bottom:		24
Ø Hole:		8



Description		
Tiger Item No.:		5170
Type:		G1
Machine Manufacturer:		Galloni
Sizes in mm		
Height:		95
Ø Top:		60
Ø Bottom:		20
Ø Spout Opening:		8



Description		
Tiger Item No.:		5173
Type:		G3
Machine Manufacturer:		Galloni
Sizes in mm		
Height:		124
Ø Top:		70
Ø Bottom:		22
Ø Spout Opening:		8

Graphite

Galloni



Description		
Tiger Item No.:		5175
Type:		G3 granulate
Machine Manufacturer:		Galloni
Sizes in mm		
Height:		124
Ø Top:		70
Ø Bottom:		22
Ø Spout Opening:		2

Graphite

Galloni



Description		
Tiger Item No.:		6064
Type:		G40
Machine Manufacturer:		Galloni
Sizes in mm		
Height:		107
Ø Top:		62
Ø Bottom:		44
Ø Spout Opening:		10



Description		
Tiger Item No.:		5190
Type:		Pressovac Dual
Machine Manufacturer:		Galloni
Sizes in mm		
Height:		71
Ø Top:		58
Ø Bottom:		40
Ø Spout Opening:		11



Description		
Tiger Item No.:		5451
Type:		Pressovac (old)
Machine Manufacturer:		Galloni
Sizes in mm		
Height:		76
Ø Top:		44
Ø Bottom:		32
Ø Spout Opening:		10

Graphite

Galloni



Description		
Tiger Item No.:		8652
Type:		A100.434 / 2 Kg
Machine Manufacturer:		Galloni
Sizes in mm		
Height:		100 / 89
Ø Top:		52 / 74
Ø Bottom:		69 / 83
Ø Spout Opening:		17 / 15



Description		
Tiger Item No.:		8663
Type:		Perfacast / 3 Kg
Machine Manufacturer:		Galloni
Sizes in mm		
Height:		111 / 100
Ø Top:		64 / 98
Ø Bottom:		84 / 96
Ø Spout Opening:		19 / 15



Description		
Tiger Item No.:		8651
Type:		A100.594 / 1 Kg
Machine Manufacturer:		Galloni
Sizes in mm		
Height:		98 / 85
Ø Top:		37 / 58
Ø Bottom:		57 / 67
Ø Spout Opening:		18 / 14

Graphite

Galloni



Description		
Tiger Item No.:		5171
Type:		G1
Machine Manufacturer:		Galloni
Sizes in mm		
Height:		130
Ø Top:		13
Ø Bottom:		17
Ø Hole:		6/119



Description		
Tiger Item No.:		5174
Type:		G3
Machine Manufacturer:		Galloni
Sizes in mm		
Height:		160
Ø Top:		13
Ø Bottom:		17
Ø Hole:		6/149



Description		
Tiger Item No.:		5181
Type:		VCM
Machine Manufacturer:		Galloni
Sizes in mm		
Height:		200
Ø Top:		11
Ø Bottom:		14
Ø Spout Opening:		5 / 180

Graphite

Galloni



Description		
Tiger Item No.:		5191
Type:		Pressovac Dual
Machine Manufacturer:		Galloni
Sizes in mm		
Height:		68
Ø Top:		10
Ø Bottom:		8
Ø Spout Opening:		3 / 55

Graphite

Indutherm



Description		
Tiger Item No.:		5491
Type:		VC 400
Machine Manufacturer:		Indutherm
Sizes in mm		
Height:		120
Ø Top:		68
Ø Bottom:		68
Ø Spout Opening:		8



Description		
Tiger Item No.:		5490
Type:		VC 600
Machine Manufacturer:		Indutherm
Sizes in mm		
Height:		120
Ø Top:		78
Ø Bottom:		78
Ø Spout Opening:		8



Description		
Tiger Item No.:		5494
Type:		VC 600 big
Machine Manufacturer:		Indutherm
Sizes in mm		
Height:		130
Ø Top:		88
Ø Bottom:		88
Ø Spout Opening:		8

Graphite

Indutherm



Description		
Tiger Item No.:		5495
Type:		VC 650 S-Shape
Machine Manufacturer:		Indutherm
Sizes in mm		
Height:		120
Ø Top:		78
Ø Bottom:		30
Ø Spout Opening:		8



Description		
Tiger Item No.:		5489
Type:		VC 600 granulate
Machine Manufacturer:		Indutherm
Sizes in mm		
Height:		120
Ø Top:		78
Ø Bottom:		78
Ø Spout Opening:		2



Description		
Tiger Item No.:		5488
Type:		VC 400 granulate
Machine Manufacturer:		Indutherm
Sizes in mm		
Height:		120
Ø Top:		68
Ø Bottom:		68
Ø Hole:		2

Graphite

Indutherm



Description		
Tiger Item No.:		5451
Type:		MC 15/16/20V
Machine Manufacturer:		Indutherm
Sizes in mm		
Height:		76
Ø Top:		44
Ø Bottom:		32
Ø Spout Opening:		10



Description		
Tiger Item No.:		5460
Type:		MC 50 / 60
Machine Manufacturer:		Indutherm
Sizes in mm		
Height:		130
Ø Top:		57
Ø Bottom:		45
Ø Hole:		11

Graphite

Indutherm



Description		
Tiger Item No.:		5420
Type:		MU 200
Machine Manufacturer:		Indutherm
Sizes in mm		
Height:		140 / 130
Ø Graphit:		42 / 68
Ø Ceramic:		70 / 78
Ø Spout Opening:		/



Description		
Tiger Item No.:		5423
Type:		MU 400
Machine Manufacturer:		Indutherm
Sizes in mm		
Height:		145 / 134
Ø Graphit:		65 / 98
Ø Ceramic:		99 / 117
Ø Spout Opening:		29 / 14



Description		
Tiger Item No.:		5423L
Type:		MU 400 (hole)
Machine Manufacturer:		Indutherm
Sizes in mm		
Height:		145 / 134
Ø Graphit:		65 / 98
Ø Ceramic:		99 / 117
Ø Spout Opening:		29 / 14

Graphite

Indutherm



Description		
Tiger Item No.:		5425L
Type:		MU 700 (hole)
Machine Manufacturer:		Indutherm
Sizes in mm		
Height:		165 / 155
Ø Graphit:		75 / 100
Ø Ceramic:		105 / 116
Ø Spout Opening:		29 / 14



Description		
Tiger Item No.:		5425D
Type:		MU 700 (thick)
Machine Manufacturer:		Indutherm
Sizes in mm		
Height:		175 / 155
Ø Graphit:		57 / 100
Ø Ceramic:		105 / 116
Ø Spout Opening:		29 / 14



Description		
Tiger Item No.:		5425
Type:		MU 700
Machine Manufacturer:		Indutherm
Sizes in mm		
Height:		165 / 155
Ø Graphit:		75 / 100
Ø Ceramic:		105 / 116
Ø Spout Opening:		29 / 14

Graphite

Indutherm



Description		
Tiger Item No.:		5430
Type:		MU 900
Machine Manufacturer:		Indutherm
Sizes in mm		
Height:		200 / 180
Ø Graphit:		78 / 110
Ø Ceramic:		122 / 115
Ø Spout Opening:		30 / 16



Description		
Tiger Item No.:		5430L
Type:		MU 900 (hole)
Machine Manufacturer:		Indutherm
Sizes in mm		
Height:		200 / 180
Ø Graphit:		78 / 110
Ø Ceramic:		122 / 115
Ø Spout Opening:		30 / 16



Description		
Tiger Item No.:		5435
Type:		MU1200
Machine Manufacturer:		Indutherm
Sizes in mm		
Height:		215 / 195
Ø Graphit:		96 / 149
Ø Ceramic:		144 / 153
Ø Spout Opening:		46 / 21

Graphite

Indutherm



Description		
Tiger Item No.:		5496
Type:		Shape 650 big
Machine Manufacturer:		Indutherm
Sizes in mm		
Height:		180
Ø Top:		12
Ø Bottom:		15
Ø Hole:		6/164



Description		
Tiger Item No.:		5492
Type:		big/round
Machine Manufacturer:		Indutherm
Sizes in mm		
Height:		180
Ø Top:		12
Ø Bottom:		15
Ø Hole:		/



Description		
Tiger Item No.:		5498
Type:		big/round + hole
Machine Manufacturer:		Indutherm
Sizes in mm		
Height:		175
Ø Top:		12
Ø Bottom:		12
Ø Hole:		5

Graphite

Indutherm



Description		
Tiger Item No.:		5493
Type:		thin/tip
Machine Manufacturer:		Indutherm
Sizes in mm		
Height:		180
Ø Top:		12
Ø Bottom:		12
Ø Hole:		/



Description		
Tiger Item No.:		5497
Type:		thin/round
Machine Manufacturer:		Indutherm
Sizes in mm		
Height:		180
Ø Top:		12
Ø Bottom:		12
Ø Hole:		/



Description		
Tiger Item No.:		5499
Type:		big/round + hole
Machine Manufacturer:		Indutherm
Sizes in mm		
Height:		180
Ø Top:		12
Ø Bottom:		15
Ø Hole:		6/159

Graphite

Indutherm



Description		
Tiger Item No.:		5483
Type:		thick / tip
Machine Manufacturer:		Indutherm
Sizes in mm		
Height:		175
Ø Top:		12
Ø Bottom:		14
Ø Hole:		6,5 / 5



Description		
Tiger Item No.:		5484
Type:		thick / round
Machine Manufacturer:		Indutherm
Sizes in mm		
Height:		174
Ø Top:		12
Ø Bottom:		14
Ø Hole:		6 / 4



Description		
Tiger Item No.:		5485
Type:		thin / tip
Machine Manufacturer:		Indutherm
Sizes in mm		
Height:		180
Ø Top:		12
Ø Bottom:		12
Ø Hole:		4

Graphite

Italimpianti



Description		
Tiger Item No.:		7401
Type:		FIM 3
Machine Manufacturer:		Italimpianti
Sizes in mm		
Height:		95
Ø Top:		850
Ø Bottom:		48
Ø Spout Opening:		8



Description		
Tiger Item No.:		7402
Type:		FIM 5
Machine Manufacturer:		Italimpianti
Sizes in mm		
Height:		125
Ø Top:		80
Ø Bottom:		48
Ø Spout Opening:		6

Graphite

Italimpianti



Description		
Tiger Item No.:		8666
Type:		FIM-NT / 6 Kg
Machine Manufacturer:		Italimpianti
Sizes in mm		
Height:		156 / 155
Ø Gaphit:		70 / 92
Ø Ceramic:		105 / 115
Ø Spout Opening:		/



Description		
Tiger Item No.:		8680
Type:		FIM-NT / 10 Kg
Machine Manufacturer:		Italimpianti
Sizes in mm		
Height:		181 / 180
Ø Gaphit:		80 / 99
Ø Ceramic:		114 / 123
Ø Spout Opening:		/

Graphite

Italimpianti



Description		
Tiger Item No.:		7403
Type:		FIM 3
Machine Manufacturer:		Italimpianti
Sizes in mm		
Height:		232
Ø Top:		17
Ø Bottom:		19
Ø Hole:		7,5 / 215



Description		
Tiger Item No.:		7404
Type:		Fim 5
Machine Manufacturer:		Italimpianti
Sizes in mm		
Height:		310
Ø Top:		26
Ø Bottom:		26
Ø Hole:		7,5 / 290

Graphite

Kerr



Description		
Tiger Item No.:		9310
Type:		1 Kg
Machine Manufacturer:		Kerr
Sizes in mm		
Height:		124,5
Ø Top:		57
Ø Bottom:		42,5
Ø Spout Opening:		12 / 10



Description		
Tiger Item No.:		9330
Type:		3 Kg
Machine Manufacturer:		Kerr
Sizes in mm		
Height:		125
Ø Top:		100
Ø Bottom:		82,5
Ø Spout Opening:		12 / 10

Graphite

Lindner



Description		
Tiger Item No.:		HLS10-Set1
Type:		HLS 1,0
Machine Manufacturer:		Lindner
Sizes in mm		
Height:		136
Ø Top + Buttom:		60
Ø Middle:		42,5
Ø Spout Opening:		31



Description		
Tiger Item No.:		HLS15-Set1
Type:		HLS 1,5
Machine Manufacturer:		Lindner
Sizes in mm		
Height:		170
Ø Top + Buttom:		75
Ø Middle:		55
Ø Spout Opening:		43



Description		
Tiger Item No.:		HLS20-Set1
Type:		HLS 2,0
Machine Manufacturer:		Lindner
Sizes in mm		
Height:		200
Ø Top + Buttom:		90
Ø Middle:		65
Ø Spout Opening:		47

Graphite

Manfredi



Description		
Tiger Item No.:		6064
Type:		G40
Machine Manufacturer:		Manfredi
Sizes in mm		
Height:		107
Ø Top:		62
Ø Bottom:		44
Ø Spout Opening:		10



Description		
Tiger Item No.:		6080
Type:		CG 120
Machine Manufacturer:		Manfredi
Sizes in mm		
Height:		148
Ø Top:		69
Ø Bottom:		62
Ø Spout Opening:		11

Graphite

Memco



Description		
Tiger Item No.:		9001
Type:		Tube
Machine Manufacturer:		Memco
Sizes in mm		
Height:		102
Ø Top:		102
Ø Bottom:		101
Ø Opening:		68,5 / 71,5

Graphite

Neutec



Description		
Tiger Item No.:		7901
Type:		
Machine Manufacturer:		Neutec
Sizes in mm		
Height:		110 / 124
Ø Top:		75
Ø Bottom:		19
Ø Spout Opening:		8



Description		
Tiger Item No.:		7902
Type:		
Machine Manufacturer:		Neutec
Sizes in mm		
Height:		225
Ø Top:		15
Ø Bottom:		15
Ø Hole:		8 / 205

Graphite

Saed



Description		
Tiger Item No.:		6064
Type:		G40
Machine Manufacturer:		Saed
Sizes in mm		
Height:		107
Ø Top:		62
Ø Bottom:		44
Ø Spout Opening:		10



Description		
Tiger Item No.:		8622
Type:		2 Kg
Machine Manufacturer:		Saed
Sizes in mm		
Height:		122 / 110
Ø Graphit:		47 / 63
Ø Ceramic:		69 / 80
Ø Spout Opening:		/

Graphite

Schultheiss



Description		
Tiger Item No.:		5541
Type:		VPC 40
Machine Manufacturer:		Schultheiss
Sizes in mm		
Height:		76
Ø Top:		52
Ø Bottom:		14
Ø Spout Opening:		6



Description		
Tiger Item No.:		5561
Type:		VPC 400
Machine Manufacturer:		Schultheiss
Sizes in mm		
Height:		136
Ø Top:		74
Ø Bottom:		23
Ø Spout Opening:		7



Description		
Tiger Item No.:		5531
Type:		VPC Pure
Machine Manufacturer:		Schultheiss
Sizes in mm		
Height:		137
Ø Top:		74
Ø Bottom:		24
Ø Spout Opening:		7,9

Graphite

Schultheiss



Description		
Tiger Item No.:		5512
Type:		IMT100-12
Machine Manufacturer:		Schultheiss
Sizes in mm		
Height:		195 / 181
Ø Graphit:		80 / 110
Ø Ceramic:		114 / 123
Ø Spout Opening:		17 / 15



Description		
Tiger Item No.:		5574
Type:		/
Machine Manufacturer:		Schultheiss
Sizes in mm		
Height:		145 / 135
Ø Graphit:		65 / 98
Ø Ceramic:		100 / 118
Ø Spout Opening:		29 / 14

Graphite

Schultheiss



Description		
Tiger Item No.:		5563
Type:		big
Machine Manufacturer:		Schultheiss
Sizes in mm		
Height:		160
Ø Top:		12
Ø Bottom:		15
Ø Hole:		/



Description		
Tiger Item No.:		5562
Type:		flat tip + hole
Machine Manufacturer:		Schultheiss
Sizes in mm		
Height:		165
Ø Top:		12
Ø Bottom:		12
Ø Hole:		4/155



Description		
Tiger Item No.:		5542
Type:		thin
Machine Manufacturer:		Schultheiss
Sizes in mm		
Height:		92
Ø Top:		11
Ø Bottom:		11
Ø Hole:		6/81

Graphite

Schultheiss



Description		
Tiger Item No.:		5532
Type:		VPC Pure
Machine Manufacturer:		Schultheiss
Sizes in mm		
Height:		162
Ø Top:		12
Ø Bottom:		14
Ø Hole:		5,4 / 123

Graphite

Tanabe



Description		
Tiger Item No.:		6821
Type:		TCG-2000
Machine Manufacturer:		Tanabe
Sizes in mm		
Height:		130
Ø Top:		64
Ø Bottom:		19
Ø Spout Opening:		8



Description		
Tiger Item No.:		6822
Type:		TCG-2000
Machine Manufacturer:		Tanabe
Sizes in mm		
Height:		200
Ø Top:		11
Ø Bottom:		15
Ø Hole:		/

Graphite

Tiger



Description		
Tiger Item No.:		7310
Type:		1 Kg Crucible
Machine Manufacturer:		/
Sizes in mm		
Height:		125
Ø Top:		64
Ø Bottom:		50
Ø Spout Opening:		8



Description		
Tiger Item No.:		7320
Type:		2 Kg Crucible
Machine Manufacturer:		/
Sizes in mm		
Height:		153
Ø Top:		75
Ø Bottom:		56
Ø Spout Opening:		9



Description		
Tiger Item No.:		7330
Type:		3 Kg Crucible
Machine Manufacturer:		/
Sizes in mm		
Height:		170
Ø Top:		77
Ø Bottom:		62
Ø Spout Opening:		14

Graphite

Tiger



Description		
Tiger Item No.:		7340
Type:		4 Kg Crucible
Machine Manufacturer:		/
Sizes in mm		
Height:		131
Ø Top:		90
Ø Bottom:		76
Ø Spout Opening:		8



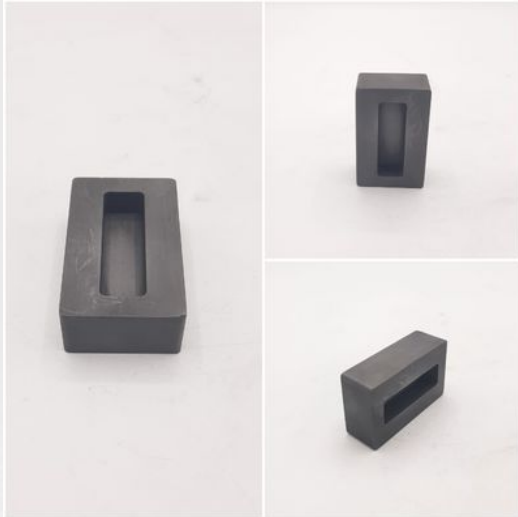
Description		
Tiger Item No.:		7350
Type:		5 Kg Crucible
Machine Manufacturer:		/
Sizes in mm		
Height:		150
Ø Top:		92
Ø Bottom:		78



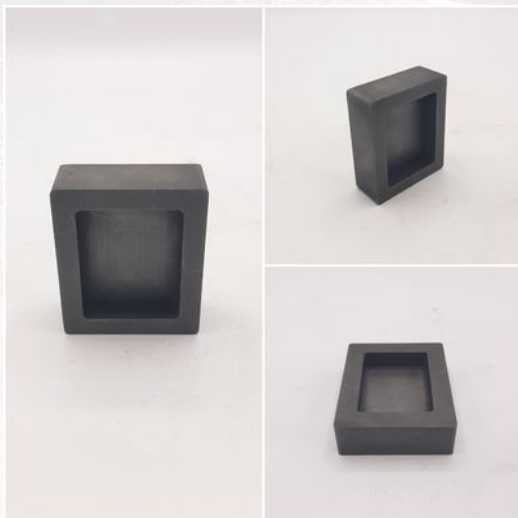
Description		
Tiger Item No.:		7020
Type:		/
Machine Manufacturer:		/
Sizes in mm		
Height:		111
Ø Top:		50
Ø Bottom:		40
Ø Spout Opening:		/

Graphite

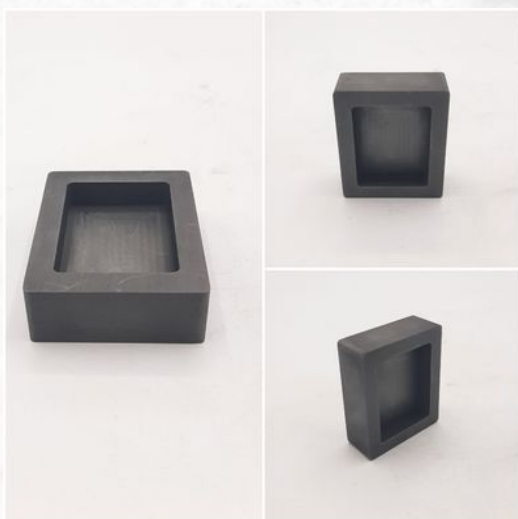
Tiger



Description		
Tiger Item No.:		GM 100
Type:		100 g
Machine Manufacturer:		/
Sizes in mm		
Height:		20
Ø Inside:		45 * 14 * 10
Ø Outside:		60 * 37 * 20
Ø Spout Opening:		/



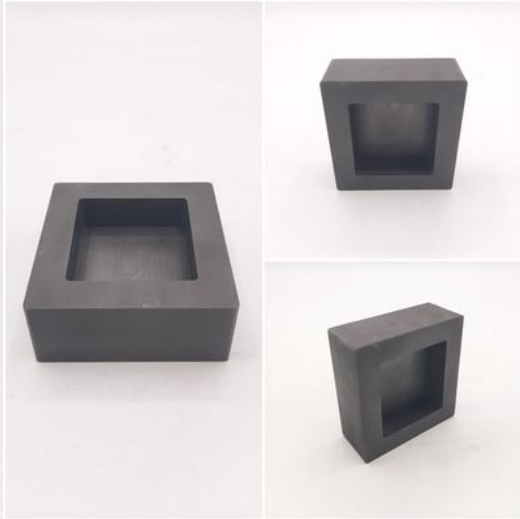
Description		
Tiger Item No.:		GM 200
Type:		200 g
Machine Manufacturer:		/
Sizes in mm		
Height:		20
Ø Inside:		45 * 35 * 10
Ø Outside:		60 * 50 * 20
Ø Spout Opening:		/



Description		
Tiger Item No.:		GM 300
Type:		300 g
Machine Manufacturer:		/
Sizes in mm		
Height:		20
Ø Inside:		50 * 37 * 10
Ø Outside:		70 * 57 * 20
Ø Spout Opening:		/

Graphite

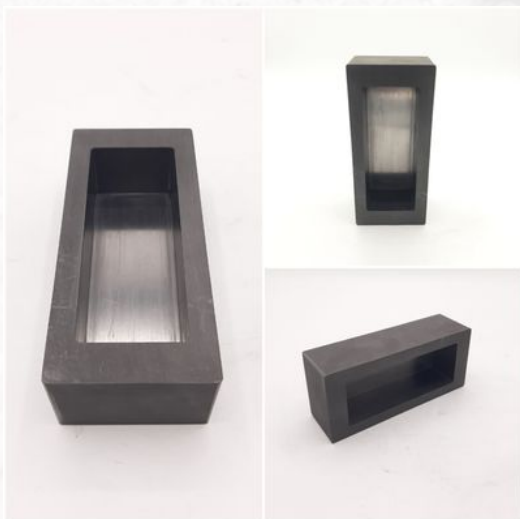
Tiger



Description		
Tiger Item No.:		GM 500
Type:		500 g
Machine Manufacturer:		/
Sizes in mm		
Height:		30
Ø Inside:		50 * 47 * 16
Ø Outside:		75 * 72 * 30
Ø Spout Opening:		/



Description		
Tiger Item No.:		GM 1000
Type:		1000 g
Machine Manufacturer:		/
Sizes in mm		
Height:		40
Ø Inside:		100 * 25 * 24
Ø Outside:		130 * 50 * 40
Ø Spout Opening:		/



Description		
Tiger Item No.:		GM 2000
Type:		2000 g
Machine Manufacturer:		/
Sizes in mm		
Height:		40
Ø Inside:		105 * 40 * 30
Ø Outside:		135 * 60 * 40
Ø Spout Opening:		/

Graphite

Topcast



Description		
Tiger Item No.:		9201
Type:		TVC (Big)
Machine Manufacturer:		Topcast
Sizes in mm		
Height:		125 / 129,5
Ø Top:		100
Ø Bottom:		19
Ø Spout Opening:		7,5



Description		
Tiger Item No.:		9210
Type:		TVC 10D
Machine Manufacturer:		Topcast
Sizes in mm		
Height:		115 / 120
Ø Top:		78
Ø Bottom:		19
Ø Spout Opening:		6



Description		
Tiger Item No.:		9212
Type:		TVC 12D
Machine Manufacturer:		Topcast
Sizes in mm		
Height:		125 / 130
Ø Top:		88
Ø Bottom:		19
Ø Spout Opening:		6

Graphite

Topcast



Description		
Tiger Item No.:		9202
Type:		TVC (Big)
Machine Manufacturer:		Topcast
Sizes in mm		
Height:		175
Ø Top:		12
Ø Bottom:		12
Ø Hole:		3,5



Description		
Tiger Item No.:		9211
Type:		TVC 10/12D
Machine Manufacturer:		Topcast
Sizes in mm		
Height:		158
Ø Top:		12
Ø Bottom:		12
Ø Hole:		4

Graphite

Ultraflex



Description		
Tiger Item No.:		9101
Type:		2DET-017-000KL
Machine Manufacturer:		Ultraflex
Sizes in mm		
Height:		107
Ø Top:		62
Ø Bottom:		44
Ø Spout Opening:		8



Description		
Tiger Item No.:		9103
Type:		2DET-015-000KA
Machine Manufacturer:		Ultraflex
Sizes in mm		
Height:		69
Ø Top:		44
Ø Bottom:		35
Ø Spout Opening:		9



Description		
Tiger Item No.:		9104
Type:		2DET-017-000Kj
Machine Manufacturer:		Ultraflex
Sizes in mm		
Height:		77
Ø Top:		49
Ø Bottom:		40
Ø Spout Opening:		9

Graphite

Ultraflex



Description		
Tiger Item No.:		6080
Type:		2DET-017-000KK
Machine Manufacturer:		Ultraflex
Sizes in mm		
Height:		148
Ø Top:		69
Ø Bottom:		62
Ø Spout Opening:		11



Description		
Tiger Item No.:		8651
Type:		2DET-016-001KB
Machine Manufacturer:		Ultraflex
Sizes in mm		
Height:		98 / 85
Ø Gaphit:		37 / 58
Ø Ceramic:		57 / 67
Ø Spout Opening:		18 / 14



Description		
Tiger Item No.:		8652
Type:		2DET-016-001KC
Machine Manufacturer:		Ultraflex
Sizes in mm		
Height:		100 / 89
Ø Gaphit:		52 / 74
Ø Ceramic:		69 / 83
Ø Spout Opening:		17 / 15

Graphite

Ultraflex



Description		
Tiger Item No.:		9120
Type:		2DET-016-001KL
Machine Manufacturer:		Ultraflex
Sizes in mm		
Height:		145 / 132
Ø Gaphit:		59 / 80
Ø Ceramic:		85 / 94
Ø Spout Opening:		/



Description		
Tiger Item No.:		9140
Type:		2DET-016-001KD
Machine Manufacturer:		Ultraflex
Sizes in mm		
Height:		165 / 155
Ø Gaphit:		75 / 100
Ø Ceramic:		105 / 116
Ø Spout Opening:		/



Description		
Tiger Item No.:		9141
Type:		2DET-016-000KD
Machine Manufacturer:		Ultraflex
Sizes in mm		
Height:		165 / 155
Ø Gaphit:		75 / 100
Ø Ceramic:		105 / 116
Ø Spout Opening:		29 / 14

Graphite

Ultraflex



Description		
Tiger Item No.:		8680
Type:		2DET-016-001KE
Machine Manufacturer:		Ultraflex
Sizes in mm		
Height:		181 / 180
Ø Gaphit:		80 / 99
Ø Ceramic:		114 / 123
Ø Spout Opening:		/



Description		
Tiger Item No.:		8612
Type:		2DET-016-001KG
Machine Manufacturer:		Ultraflex
Sizes in mm		
Height:		181 / 180
Ø Gaphit:		87 / 111
Ø Ceramic:		127 / 135
Ø Spout Opening:		/



Description		
Tiger Item No.:		8668
Type:		2DET-016-001KD
Machine Manufacturer:		Ultraflex
Sizes in mm		
Height:		165 / 155
Ø Gaphit:		75 / 100
Ø Ceramic:		105 / 116
Ø Spout Opening:		/

Graphite

Ultraflex



Description		
Tiger Item No.:		9130
Type:		2DET-017-600KW
Machine Manufacturer:		Ultraflex
Sizes in mm		
Height:		145
Ø Top:		68
Ø Bottom:		29
Ø Spout Opening:		8



Description		
Tiger Item No.:		9150
Type:		2DET-017-600RE
Machine Manufacturer:		Ultraflex
Sizes in mm		
Height:		155
Ø Top:		88
Ø Bottom:		29
Ø Spout Opening:		8



Description		
Tiger Item No.:		9131
Type:		2DET-017-600KN
Machine Manufacturer:		Ultraflex
Sizes in mm		
Height:		206
Ø Top:		18
Ø Bottom:		18
Ø Hole:		5 / 191

Graphite

Yasui



Description		
Tiger Item No.:		5621
Type:		K2
Machine Manufacturer:		Yasui
Sizes in mm		
Height:		129
Ø Top:		70
Ø Bottom:		23
Ø Spout Opening:		8



Description		
Tiger Item No.:		5625
Type:		K2 next KW5
Machine Manufacturer:		Yasui
Sizes in mm		
Height:		113
Ø Top:		70
Ø Bottom:		23
Ø Spout Opening:		8



Description		
Tiger Item No.:		5658
Type:		K2 next KW8
Machine Manufacturer:		Yasui
Sizes in mm		
Height:		131
Ø Top:		70
Ø Bottom:		23
Ø Spout Opening:		8

Graphite

Yasui



Description		
Tiger Item No.:		5631
Type:		K3
Machine Manufacturer:		Yasui
Sizes in mm		
Height:		72
Ø Top:		65
Ø Bottom:		40
Ø Spout Opening:		8



Description		
Tiger Item No.:		5641
Type:		K5
Machine Manufacturer:		Yasui
Sizes in mm		
Height:		90
Ø Top:		70
Ø Bottom:		20
Ø Spout Opening:		8



Description		
Tiger Item No.:		5615
Type:		KT15 S
Machine Manufacturer:		Yasui
Sizes in mm		
Height:		93
Ø Top:		62
Ø Bottom:		17
Ø Spout Opening:		7

Graphite

Yasui



Description		
Tiger Item No.:		5680
Type:		KT17
Machine Manufacturer:		Yasui
Sizes in mm		
Height:		130
Ø Top:		70
Ø Bottom:		17
Ø Spout Opening:		8



Description		
Tiger Item No.:		5682
Type:		KT18
Machine Manufacturer:		Yasui
Sizes in mm		
Height:		130
Ø Top:		70
Ø Bottom:		23
Ø Spout Opening:		8

Graphite

Yasui



Description		
Tiger Item No.:		5622
Type:		K2
Machine Manufacturer:		Yasui
Sizes in mm		
Height:		150
Ø Top:		13/15
Ø Bottom:		15
Ø Hole:		7/135



Description		
Tiger Item No.:		5632
Type:		K3
Machine Manufacturer:		Yasui
Sizes in mm		
Height:		133
Ø Top:		13/16
Ø Bottom:		16
Ø Hole:		7/119



Description		
Tiger Item No.:		5642
Type:		K5
Machine Manufacturer:		Yasui
Sizes in mm		
Height:		133
Ø Top:		13/16
Ø Bottom:		16
Ø Hole:		7/119

Graphite

Yasui



Description		
Tiger Item No.:		5626
Type:		K2 next KW5/8
Machine Manufacturer:		Yasui
Sizes in mm		
Height:		146
Ø Top:		13/16
Ø Bottom:		16
Ø Hole:		7/137



Description		
Tiger Item No.:		5616
Type:		KT15 S
Machine Manufacturer:		Yasui
Sizes in mm		
Height:		137
Ø Top:		Okt 13
Ø Bottom:		13
Ø Hole:		7 / 129



Description		
Tiger Item No.:		5681
Type:		KT 17
Machine Manufacturer:		Yasui
Sizes in mm		
Height:		152
Ø Top:		13/16
Ø Bottom:		14
Ø Hole:		7/141

Graphite

Yasui



Description		
Tiger Item No.:		5683
Type:		KT 18
Machine Manufacturer:		Yasui
Sizes in mm		
Height:		149
Ø Top:		13/16
Ø Buttom:		12
Ø Hole:		4/155

Graphite

Yoshida



Description		
Tiger Item No.:		5810
Type:		YGP
Machine Manufacturer:		Yoshida
Sizes in mm		
Height:		47
Ø Top:		44
Ø Bottom:		30
Ø Spout Opening:		/



Description		
Tiger Item No.:		5812
Type:		YGP / Set
Machine Manufacturer:		Yoshida
Sizes in mm		
Height:		57,5
Ø Gaphit:		44 / 30
Ø Ceramic:		53 / 42
Ø Spout Opening:		/

Graphite for continuous casting

For continuous casting, we offer custom-made graphite molds and rods. To ensure optimal service life, the molds are tailored to the alloy you are processing.



Our advantages:

- High resistance to chemical and thermal stress
- Good thermal conductivity
- Little wetting of the mold surface
- Excellent thermal shock resistance
- Long service life
- Low abrasion



Clay Graphite / SiC

Item No.:	Description	Height in mm	Outer Diameter in mm	Inner Diameter in mm
441001	A1	90	90	55
441002	A2	110	102	60
441003	A3	130	115	75
441004	A4	140	115	75
441005	A5	150	125	85
441006	A6	165	130	90
441008	A8	180	155	110
441010	A10	200	160	115
441012	A12	210	170	120
441016	A16	230	185	125
441020	A20	255	200	140
441025	A25	260	220	150
441030	A30	290	230	160
441035	A35	300	240	170
441040	A40	310	260	190
441050	A50	330	270	195
441060	A60	345	285	200
441070	A70	360	295	205
441080	A80	375	305	215
441090	A90	380	315	225
441100	A100	400	325	230
441120	A120	410	345	245
441150	A150	450	370	260
441200	A200	500	400	285
441250	A250	515	420	300
441300	A300	540	440	315
441350	A350	590	475	330
441400	A400	600	500	340
441500	A500	650	510	350
441600	A600	680	530	380
441800	A800	800	560	380



*Dimensions may vary

Investment Powder



PRESTIGE OPTIMA INVESTMENT POWDER

FOR CASTING RESIN & PLASTIC PATTERNS

Prestige OPTIMA™ is a significant breakthrough by Certus to develop a new generation, gypsum bonded investment that consistently provides superior, ultra smooth casting surfaces for a variety of today's pattern materials including Standard injection waxes. Also for carving waxes, resin / plastic patterns, wax based polymers and hybrid wax.



PRESTIGE ORO INVESTMENT POWDER

FOR CASTING PALLADIUM YELLOW & WHITE GOLD UP TO 22 CARAT

Prestige ORO™ is a ultra-premium gypsum bonded investment developed and perfected for the casting of gold up to 22K. To achieve the smoothest casting surface possible, ORO™ incorporates specially graded refractory ingredients along with specialized control chemicals to make it the most user-friendly investments on the market today.



PRESTIGE UNICAST INVESTMENT POWDER

FOR CASTING YELLOW AND WHITE GOLD UP TO 18 CARAT

Prestige UNICAST™ is a premium quality gypsum bonded investment in the prestige line of investments designed for users that prefer one investment for multiple casting applications. Prestige UNICAST™ is a perfect choice for casting gold up to 18k and above for producing the most complex designs in sterling and fine silver.



PRESTIGE SIGMA INVESTMENT POWDER

FOR CASTING SILVER BRASS, AND BRONZE

Prestige SIGMA™ is a high value, low cost gypsum bonded investment powder developed by Certus to provide the user and industry with an investment powder engineered specially to eliminate costly surface defects associated with casting the most difficult designs and shapes cast in silver and bronze.



Investment Powder



FERRO-VEST VHT INVESTMENT POWDER

FOR CASTING PLATINUM AND STAINLESS STEEL

FERRO-VEST VHT is a superior two-part, high temperature investment developed to give premium results casting platinum, palladium & stainless steel alloys and metals that melt in excess of 1500 °C. - 2700 °C. Ferro-Vest VHT investment powder supplies superior, consistent results and unlike other two-part high temperature investments on the market, comes complete with special proprietary additives that eliminate air bubbles and will provide a far smoother cast surface that requires less finishing than with other brands.



PRESTIGE SPARKLE INVESTMENT POWDER

FOR CASTING STONE IN PLACE

Prestige SPARKLE™ is a special application, gypsum bonded investment powder developed by Certus for casting 'Stone in Place' (wax setting). Pre-blended with special, technical grade anti-oxidizing ingredients, SPARKLE™ forms a reliable, protective barrier (heat shield) that protects diamonds, semi-precious stones and cubic zirconia from clouding or burning during the burnout and casting process. Engineered with environmentally friendly control chemicals.



PRESTIGE-POWERCAST INVESTMENT POWDER

FOR CASTING INDUSTRIAL METALS

Prestige POWERCAST™ is a gypsum bonded investment Powder for industrial casting. This was specially developed for casting industrial metals like aluminium, bronze, copper, brass and their alloys. The investment Powder is also suitable for casting sculptures.



Wax



ALL SEASONS JEWELRY INJECTION WAX

"All Season" Reliability - Perfect for use all year round in all types of climates.

Reproduction - Captures sharpest details of the most intricate designs.

Smooth Finish - Provides a high gloss surface finish for superior castings that require less finishing.

Complete Fills - High fluidity fills the most complex designs.

Easy View - Any imperfections present are easy to identify for repair.

Low Shrinkage - Low injection temperature (68°C) for less shrinkage and sink in thick sections.

Versatile - One wax for everything. unique formula works perfectly for all types of patterns. Great for everything. From thick too thin to fine filigree.

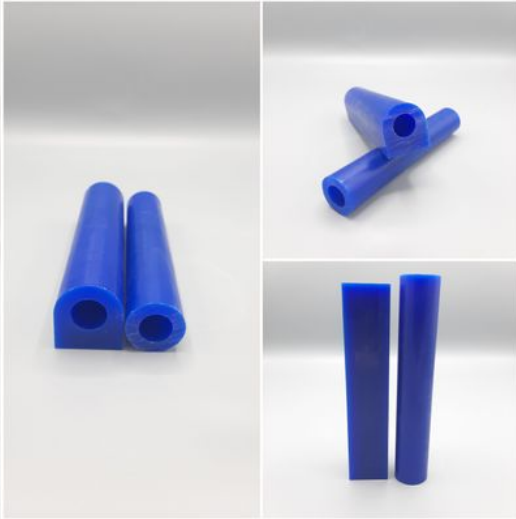
Extra Long Shelf Life - Properly stored, patterns made with "All Seasons" injection wax will remain ready for use almost indefinitely.

Low Ash Content - High purity of ingredients and near zero ash content provide cleaner burnouts for a superior casting surface.



The colours blue, green and pink are available in different packaging sizes.

Wax



Wax Tube Blue	Item No.:
Center Hole	27102
Flat Top	27132



Wax Tube Green	Item No.:
Off-Center	27111
Flat Top	27131



Carving Wax Green	Item No.:
Slices Bars	27002

Resin



Resin	Item No.:
SLA 250 g	39025
SLA 500 g	39050
SLA 1000 g	39100



Resin	Item No.:
LCD 250 g	38025
LCD 500 g	38050
LCD 1000 g	38100

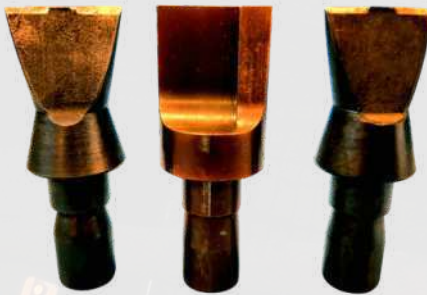


To show our quality we could provide you with some printed samples!

Casting Equipment



Blasting sand 25 Kg	Item No.:
Glas round 000-050 my	41001
Glas round 050-100 my	41002
Glas round 070-110 my	41003
Glas round 100-150 my	41004
Glas round 150-200 my	41005
Glas round 100-200 my	41006
Glas round 040-070 my	41007



Pneumatic Knives	Item Nr.:
edged at the middle	48006
edged at the side	48007



Sprue bases	Item No.:
Ø 50 mm	420016
Ø 60 mm	420014
Ø 75 mm	420012
Ø 80 mm	420010
Ø 90 mm	42001
Ø 100 mm	42002
Ø 110 mm	42003
Ø 120 mm	42004
Ø 130 mm	42006
Ø 140 mm	42007
Ø 150 mm	42008

Casting Equipment



Tongs	Item No.:
60 cm long for 90 cm Ø	TH90
60 cm long for 102 cm Ø	TH102
60 cm long for 115 cm Ø	TH115
For 1 Kg graphite crucibles	TZKG

» extensions are possible!



Molding sand (oil-bound)	Item No.:
Molding sand: 25 Kg / 5 Kg / 2 Kg / 1 Kg	FS



Ceramic Glue	Item No.:
2 kg powder including binder	7700

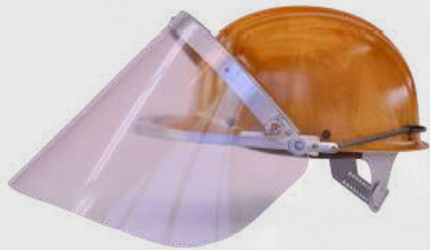
Dialux polishingpaste	Item. No.:
Dialux black, grey, green, red, yellow, white and blue	Dia-black/ grey/green/ red/yellow/ white/blue



Drying paper	Item. No.:
Available in various sizes. Suitable for Ferro-Vest	NAP

NEW

Casting Equipment



Heat protection helmet	Item No.:
foldable with disc	HSH-SK



Gloves	Item No.:
Latex gloves	41035
Heat protection gloves	HH



Foundry apron	Item No.:
100 % aramid, with neck and back strap	GS



Order by kg!

Casting Equipment



Bronze in granulated form (90% copper 10% tin)

Brass in granulated form (67% copper 33% zinc)



Tombak in granulated form (90% copper 10% zinc)

Aluminum in strips (AlMgSi 0,5)



Zinc in granulated form

Tin in strips



Casting Equipment



**Flaks are
manufactured to
customer
specifiations. MADE
IN GERMANY!**



Flask Foil	Item No.:
Flask / 90 mm Ø 170 mm height	FF090/170
Flask / 100 mm Ø 150 mm height	FF100/150
Flask / 100 mm Ø 200 mm height	FF100/200
Flask / 100 mm Ø 250 mm height	FF100/250
Flask / 110 mm Ø 200 mm height	FF110/200
Flask / 110 mm Ø 250 mm height	FF110/250
Flask / 125 mm Ø 200 mm height	FF125/200
Flask / 125 mm Ø 350 mm height	FF125/350
Flask / 150 mm Ø 350 mm height	FF150/350

Other sizes on request!

Casting Equipment



Matrix Powder	Item No.:
50 g in a plastic can	34021
250 g in a bag	34023
1000 g in a bag	34025
2000 g in a bucket	34027

Quartz Stirring Rod	Item Nr.:
10 mm x 400 mm	43001
8 mm x 400 mm	43002

Graphite Stirring Rod	Item No.:
10 mm x 400 mm	43014
16 mm x 500 mm	43015

Silicone



Silicone Rubber 2,27 Kg / 22,7 Kg Box	Item No.:
Accu-Sil 20 (TQ) Shore A 38 - 40	Accu-Sil 20
Accu-Sil 40 (Green) Shore A 48 - 50	Accu-Sil 40

new

Casting Equipment

Silicone

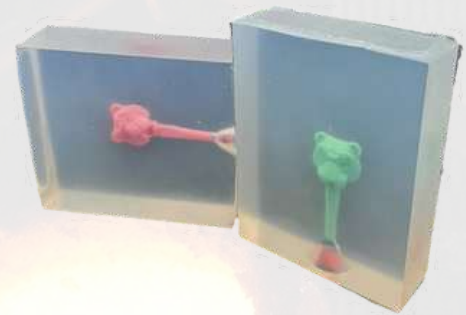
Our silicone can be customized without surcharge.

Changeable characteristics:

- Color
- Curing time
- Mixing ratio 10:1 or 1:1
- Hardness

Available container sizes:

0,5 Kg
1,0 Kg
5,0 Kg
25 Kg
200 Kg



Casting Equipment

Silicone

Our standard RTV silicone is available with a hardness of shore 40 and comes with a mixing ratio of 10:1 (clear appearance).

Silicone	Item No.:
5 kg rubber + 0,5 Kg hardener	33002
Spray 400 ml can	34011



Tiger Crystal Clear Silicone Technical Datas

Viscosity cps	2300 ± 200	2500 ± 200	6000 ± 200	12000 ± 500	12000 ± 500	12000 ± 500	15000 ± 500	15000 ± 500	25000 ± 100	25000 ± 100	35000 ± 100
Operation time at 25 °C / minutes	30 - 50	30 - 50	30 - 50	30 - 50	30 - 50	30 - 50	30 - 50	30 - 50	30 - 50	30 - 50	30 - 50
Curing time basically / hours	3 - 5	3 - 5	3 - 5	3 - 5	3 - 5	3 - 5	3 - 5	3 - 5	3 - 5	3 - 5	3 - 5
Curing time perfectly / hours	12	12	12	12	12	12	12	12	12	12	12
Hardness Shore A	0	5 ± 2	10 ± 2	15 ± 2	20 ± 2	25 ± 2	30 ± 2	35 ± 2	40 ± 2	45 ± 2	50 ± 2
Tear strength kn / m	3	4	6	8	9	12	14	14	15	13	11
Tensile strength Mpa	1	1,5	3	4	4,5	5	5	5,5	6	5	3,5
Shrinkage %	≤ 0,1	≤ 0,1	≤ 0,1	≤ 0,1	≤ 0,1	≤ 0,1	≤ 0,1	≤ 0,1	≤ 0,1	≤ 0,1	≤ 0,1
Elongation %	450	450	600	700	650	500	500	420	300	250	140
Density g / cm ³	1,03	1,03	1,03	1,03	1,03	1,03	1,03	1,03	1,03	1,03	1,03

ALL TIMES ARE ADJUSTABLE TO THE CUSTOMERS REQUEST

Mixing ratio 1:1 or 10:1

Tiger Colored Silicone Technical Datas

Viscosity cps	1300 ± 200	1700 ± 500	1900 ± 500	3800 ± 1000	3900 ± 1000	5400 ± 2000	6000 ± 2000	7000 ± 3000	6800 ± 2000	6800 ± 3000	9000 ± 1000	11000 ± 3000
Operation time at 25 °C / minutes	30 - 50	30 - 50	30 - 50	30 - 50	30 - 50	30 - 50	30 - 50	30 - 50	30 - 50	30 - 50	30 - 50	30 - 50
Curing time basically / hours	3 - 5	3 - 5	3 - 5	3 - 5	3 - 5	3 - 5	3 - 5	3 - 5	3 - 5	3 - 5	3 - 5	3 - 5
Curing time perfectly / hours	12	12	12	12	12	12	12	12	12	12	12	12
Hardness Shore A	5 ± 2	10 ± 2	15 ± 2	20 ± 2	25 ± 2	30 ± 2	35 ± 2	40 ± 2	45 ± 2	50 ± 2	55 ± 2	60 ± 2
Tear strength kn / m	14 ± 2	20 ± 3	22 ± 3	25 ± 4	30 ± 2	26 ± 4	21 ± 5	16 ± 3	15 ± 1	14 ± 4	11 ± 2	10 ± 4
Tensile strength Mpa	3 ± 0,5	4,5 ± 0,5	5 ± 0,5	6,5 ± 1	7 ± 2	8 ± 2	8 ± 2	8 ± 1	8 ± 3	8 ± 3	7 ± 2	6 ± 3
Shrinkage %	≤ 0,1	≤ 0,1	≤ 0,1	≤ 0,1	≤ 0,1	≤ 0,1	≤ 0,1	≤ 0,1	≤ 0,1	≤ 0,1	≤ 0,1	≤ 0,1
Elongation %	450 - 610	460 - 560	460 - 560	410 - 560	420 - 610	460 - 600	460 - 610	320 - 460	210 - 400	210 - 410	110 - 210	90 - 160
Density g / cm ³	1,03	1,03	1,03	1,03	1,03	1,03	1,03	1,03	1,03	1,03	1,03	1,03

ALL TIMES ARE ADJUSTABLE TO THE CUSTOMERS REQUEST

Mixing ratio 1:1 or 10:1

Machines



HPP 06 Pneumatic cutter



VP 250 Vulcanizing press

VP 320 Vulcanizing press



KG 100 Investment braking
and casting cleaning machine



EB 5 Investment mixing
machine



EB 8 Investment mixing
machine

Machines

 VELMATEC

PLS Engraving laser



Available with 20, 30, 60 or 100 watt



AM 2 Melting furnace

Melting furnace with a maximum temperature of 1200 °C. Suitable for 1 Kg graphite crucibles. On request also available for 2 + 3 Kg graphite crucibles.

Notes:



Notes:



Contact Information

Web:

www.Tiger-x.com

www.Tiger-x.de

Mail:

info@tiger-x.com

Phone:

+49 7231 977250

